

Runnemedede Public Schools

Jade A. Yezzi, Principal
jyezzi@runnemededeschools.org

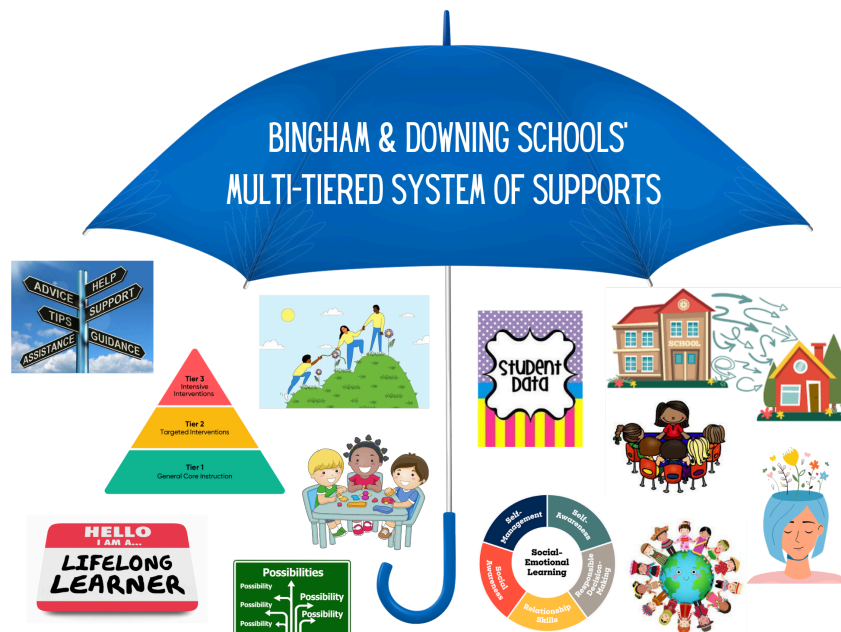
Aline Bingham School
100 Orchard Ave.
Runnemedede, NJ 08078-1644
Phone: 856-939-3192
Fax: 856-939-5423

Grace Downing School
100 E. Third Ave.
Runnemedede, NJ 08078-1196
Phone: 856-939-4036
Fax: 856-939-5438

January 11, 2024

Dear Parents,

Happy New Year! Over the past 10 years, we have consistently used the Response to Intervention Model (**RTI**) as our guide to supporting students. That will not change. We meet every eight weeks to review student data and discuss ways we can help our students and staff succeed. You may not be familiar with the acronym **MTSS**. MTSS stands for multi-tiered system of supports. As seen below, our MTSS model at Bingham & Downing has various focal points that highlight all that we do for our students, staff, and school community. Besides the new term, this is nothing new. Our framework includes our intervention model, teamwork philosophy, social-emotional learning, professional development, multilingual learners, school-home connections, and much more. I am proud to be a part of a team of educators that continues to grow and thrive. Your child's teacher will be sending home data and work samples throughout the next few weeks that will provide you with specific details about your child's progress in reading, writing, and math. **Progress reports for the second marking period will be available to you through the parent portal on 2/5/24.**



I wish you all the best in 2024!

Sincerely,
Jade A. Yezzi
Principal

WE ARE BUCKET FILLING SCHOOLS

